



## 29 Rosamund Avenue | Pickering YO18 7HF

An immaculately presented three bedroom detached bungalow occupying a pleasant position in this much sought after residential location situated close to Pickering Castle yet within walking distance of the town centre.

The superb spacious accommodation which lies entirely on one level comprises reception hallway, sitting room with feature

fireplace, spacious fitted kitchen, sun room, snug, utility area, three bedrooms and fitted shower room all of which enjoys the benefit of gas fired central heating and double glazing.

Externally there are gardens, driveway parking and GARAGE.

Pickering is an attractive market town offering a good range of local amenities and recreational facilities.



**Guide Price £440,000**

# 29 Rosamund Avenue | Pickering



## Accommodation Comprises

Entrance door leading to:

### Spacious Reception Hallway

With central heating radiator, coving to ceiling, double glazed window to the front elevation, oak internal doors, access to roof space with timber loft ladder. The loft is 3/4 boarded with light and power and also houses the boiler. Walk in storage cupboard.

### Delightful Sittingroom

With feature fireplace, attractive electric fire, coving to ceiling, double glazed window to the front elevation, central heating radiators, double doors leading to:

### Sunroom

With double glazed windows and door to outside.

### Snug

With double glazed window to the rear

elevation, coving to ceiling and central heating radiator.

### Fitted Dining Kitchen

Comprising 1 1/2 bowl drainer sink unit with mixer tap over, extensive range of wall and base units incorporating drawer compartments, display cabinets, rolled edge work surfaces and tiled splash backs, built in oven with four ring hob and stoves extractor canopy. Built in fridge, freezer and dishwasher, double glazed velux window and double glazed window to the side elevation, door leading to :

### Rear Porch/Utility Room

With plumbing for automatic washing machine, space for drier, rolled edge work surfaces, tiled flooring, double glazed windows and door to outside.

### Master Bedroom

With fitted furniture comprising wardrobes with some shelving; central heating radiator, coving to ceiling,



double glazed window to the front elevation.

### **Bedroom Two**

Central heating radiator, double glazed window to the rear elevation, coving to ceiling.

### **Bedroom Three**

Incorporating office/study area, central heating radiator, double glazed window to the side elevation, concertina doors opening into study area ideal for desk and storage.

### **Modern Fitted Shower Room**

Comprising double shower cubicle with shower unit, vanity unit with inset wash hand basin with cupboards below, low flush w.c., wall tiling, coving to ceiling, double glazed window to the rear elevation, central heating radiator. Airing cupboard housing hot water cylinder.

### **Cloakroom**

Comprising wash hand basin, low flush w.c., tiled splash backs, double glazed window and coving to ceiling.

### **Outside**

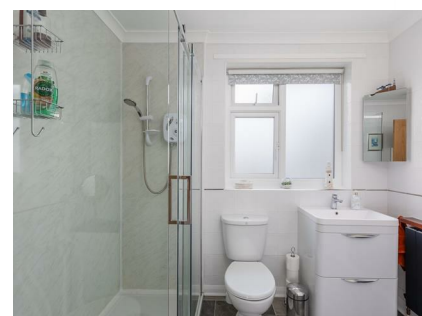
There is a spacious block paved driveway capable of parking numerous cars with dwarf wall, laid lawn with flower/shrubbery borders, trees and shrubs. Driveway leads to garage having light and power with up and over door and personal door to the rear.

To the rear of the property there is a laid lawn and patio area with flower/shrubbery borders and various other trees and shrubs together with apple and plum trees.

There are two garden sheds and greenhouse.

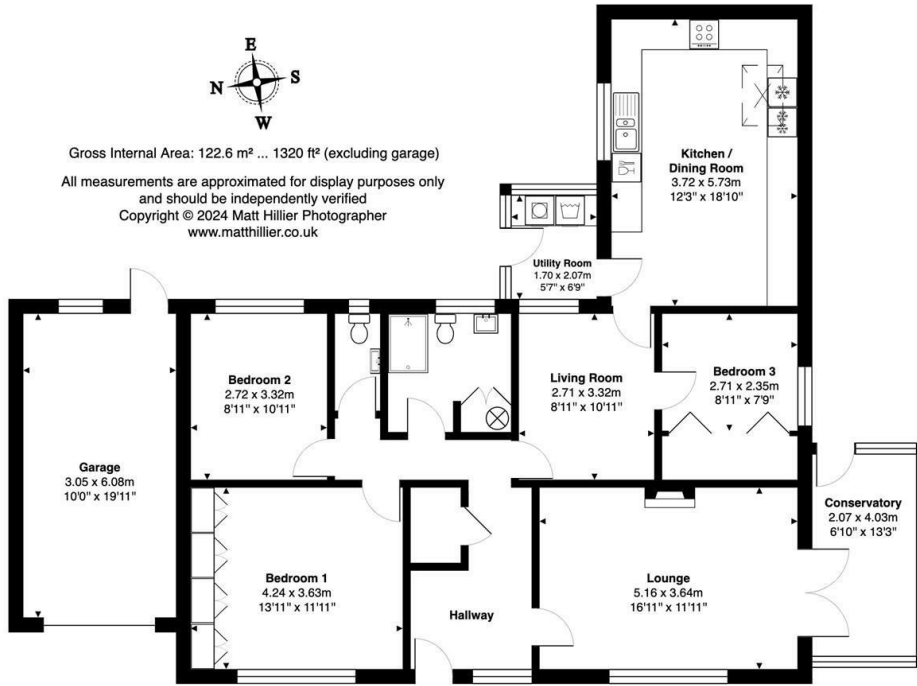
### **Services**

Mains gas, electricity, water and drainage are connected.



# 29 Rosamund Avenue | Pickering

29 Rosamund Avenue, Pickering, YO18 7HF



## VIEWING

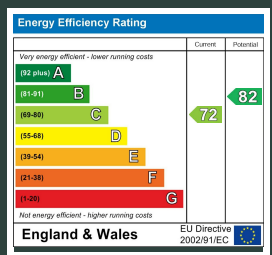
By appointment with the Agents Pickering Office. Tel: 01751 472724.

## COUNCIL TAX BAND

D

## ENERGY PERFORMANCE RATING

C



St Georges House 39 Market Place, Pickering, YO18 7AE

t: 01751 472724

e: pickering@boultoncooper.co.uk

[boultoncooper.co.uk](http://boultoncooper.co.uk)



### CONSUMER PROTECTION FROM UNFAIR TRADING REGULATIONS 2008

The description contained in this brochure is intended only to give a general impression of the property, its location and features, in order to help you to decide whether you wish to look at it. We do our very best to provide accurate information but we are human, so you should not allow any decisions to be influenced by it. For example any measurements are approximate and, where such things as central heating, plumbing, wiring or mains services are mentioned, we would advise you to take your own steps to check their existence and condition. Although we cannot accept any responsibility for any inferences drawn from this brochure or any inaccuracy in it, we shall always try to help you with any queries.

BoultonCooper for themselves and for the vendors or lessors of the property/properties, whose agents they are, give notice that (i) the particulars are produced in good faith, are set out as a general guide only and do not constitute any part of the contract; (ii) no person in the employment of BoultonCooper has any authority to make or give representation or warranty whatever in relation to this/these property/properties.

**BC**  
Est. 1801